

# ENCORE

YOUR GUIDE TO THE VISUAL AND PERFORMING ARTS IN RHODE ISLAND AND S.E. MASSACHUSETTS

COMING THIS OCTOBER



**NOV. 2** **Fourth Annual Holiday Art Sale**  
7 Thomes St., Providence, facebook.com/encoreart

**4** **Annual Commemoration of 25th Anniversary of Newtown Congressional District**  
22 Mineral Ave., North Attleboro, mass.gov

**8** **Lewis Black: The 20th Anniversary of the President**  
Performing Arts Center, Lewis Black connects themes through his art and music to provide a cathartic release of anger and disillusionment for his audience. Lewis is the rare comic who can cause an audience to laugh themselves silly while making compelling points about the absurdity of our world. 730 pm, 200 Weybosset St., Providence, jaymccoy.com

**14** **Philharmonic Orchestra Classical Concert at the Value**  
7 Thomes St., Providence, rhodeislandphil.org

**14-27** **Read to Honor at the Rhode Island Children's Theater**  
Square, Cranston, artdiscovery.org

**15-19** **HyperMan: A Play by the Wilbury Theatre Group**  
In this latest play written by break-out poet Iain Goodman, three rising hip-hop stars deal with issues of friendship, race and privilege in the wake of a tragedy. See website for times. 400 Somerset St., Providence, rhodeislandtheatre.org

**19-22** **JUMP! Projects**  
Amyr Deneo Studio, 545 Pawtucket Ave., Pawtucket, jumpanddance.org

**19-27** **Musicians Address Intergenerational Mystery**  
Arts Center, 101 Bulfinch Square, Cranston, artdiscovery.org

**27-29** **Once on an Island at the James and Gloria Marston Cultural Arts Center**  
Bulfinch Park Dr., Providence, atcenter.org

**29** **PS2028 and Call of Art Gallery Night**  
Tony Fancher, a former head singer of the Patuxent, plays

**Q&A** Geraldine Smith, Executive Director of the Ocean State Philharmonic Orchestra and Music School

**200 words (full page advertisers)**  
What have been some of your favorite performances?  
All of our concertgoers are avid and wonderful for different reasons. Our 2019 season finale, which featured Stavinsky's The Ride of Spring, immediately comes to mind. We've had our first concert executive director, and the economy had recently collapsed - broadening our audience, so along our ability to perform a work with 200 musicians. We had our first budget by 11 percent. But then John and Letitia Carter made a special donation, and the performance was spectacular!

**200 words (full page advertisers)**  
What else is in the Philharmonic's future? This season we have an incredibly exciting and diverse season (partner with Philharmonic Orchestras) featuring the Ocean State Philharmonic Orchestra and Music School, 23 Grayson Avenue, Pawtucket, tickets.oceanstatephil.org

**30** **Harmonized Beat**  
Evan Greenstein, greenstein@evan.com

**31** **Pawtucket Orchestra**  
The Pawtucket Orchestra presents "The Nutcracker" at the Allen-Gardner Center. Michael Christ, leads the Orchestra with performances of Daria's The Snowman's Expedition and

War veteran struggles to find his way back home to his wife and son while unconsciously being controlled by a host of gods. You will not want to miss this performance! See your tickets early! 2017 Washington St., Providence, rhodeislandtheatre.org

**4-11** **Artist's Exchange's October Christmas Carol**  
Theatre 52, 42 Bulfinch St., Cranston, artists-exchange.org

**15** **Exploring National Identity: How Do You Feel About the Election?**  
Catholic Gallery Night Performance at RISD  
Providence, web.risdmuseum.org

**16-17** **Play by the Wilbury Theatre Group**  
An Avant American musical by

**Performance Highlight**  
**A Christmas Carol: With a Twist**  
This famous tale gets reworked when the main characters, from Scrooge to the ghosts of Christmas Past, Present and Future, meet in the year 2020. Led by Campbell Mitchell, a holiday play uses the entrance of the spirit who, with adorable little boys, try to get into a musical quartet of banjo, guitar and accordion plays music on the stage. The Worcester Youth Players Theatre, 40 Somerset St., Worcester, rhodeislandtheatre.org

**100 words (half page advertisers)**  
This famous tale gets reworked when the main characters, from Scrooge to the ghosts of Christmas Past, Present and Future, meet in the year 2020. Led by Campbell Mitchell, a holiday play uses the entrance of the spirit who, with adorable little boys, try to get into a musical quartet of banjo, guitar and accordion plays music on the stage. The Worcester Youth Players Theatre, 40 Somerset St., Worcester, rhodeislandtheatre.org

**Art Works at RISD**  
This year, RISD's Art Works exhibit will feature a new theme: "The Art of the 2020s". On display now through October 14, 2020. Combining video, sculpture, photography and music by Mozart, this exhibit speaks intense emotions and perceptions.

**200 words (full page advertisers)**  
"The Phantom of Liberty: Contemporary Works in the Field" through December 15, 2020. This exhibit features more than 100 contemporary artworks by artists from around the world.

**200 words (full page advertisers)**  
"The Phantom of Liberty: Contemporary Works in the Field" through December 15, 2020. This exhibit features more than 100 contemporary artworks by artists from around the world.

**200 words (full page advertisers)**  
"The Phantom of Liberty: Contemporary Works in the Field" through December 15, 2020. This exhibit features more than 100 contemporary artworks by artists from around the world.

**18-21** **Scenes from the Polar Express**  
Jump Dance Studio, 545 Pawtucket Ave., Pawtucket, jumpanddance.org

**22** **Bravo Dec. 16: The Boy of the West**  
The Children's Theater of Warwick, 125 Jefferson Blvd., Warwick, childrenstheaterofwarwick.org

**22** **Annals at the New Bedford Katerian Theater**  
From the Terry Award-winning series of the Broadway classic, Ragtime, Annals transports you from the heights of the Russian Empire to the experience of Paris in the 1920s, as a brave young woman sets out to discover the mystery of her past. Pursued by a ruthless Soviet officer determined to silence her, Anya seeks the aid of a cunning conman and a

**23** **Bravo Dec. 2: The Road to Brown University**  
100 Bulfinch Square, Cranston, artdiscovery.org

**24-25** **Address Family Reunion**  
Musical 100 Bulfinch Square, Cranston, artdiscovery.org

**26** **Bravo Nov. 18: Little Shop of Horrors at the Arts Center**  
Company 127 Main St., Pawtucket, artdiscovery.org

**26-7** **Musicians at the Arts Center**  
Bulfinch Park Dr., Providence, atcenter.org

**28** **Cricket**  
400 West 10th St., Providence, rhodeislandtheatre.org

**31** **New Bedford Orchestra**  
"The Nutcracker" at the

**DEEP DISCOUNTS**  
We are offering very steeply discounted advertising rates to the industry for this special section.

**141,000 Readers**

**Rhode Island Monthly subscribers are:**

- 61% female
- Average household income of \$215,000
- 89% aged 35+
- 62% attended a live theater performance in a typical year.

From theater and dance to fine art and music, **Encore**, a special section in *Rhode Island Monthly's* October issue, will be a comprehensive guide to upcoming performances, exhibits and events this fall through spring season throughout Rhode Island and Southeastern Massachusetts.

Advertisers will receive descriptive event listings for upcoming season. Additionally, all half page or larger advertisers will receive a **highlighted write-up** showcasing some aspect of the season. See samples shown.

**Four-color rates:**

1/6 page ..... **\$750**  
 1/3 page ..... **\$950**  
 1/2 page ..... **\$1,110**  
 Full page ..... **\$1,995**

**ENCORE Deadlines:**

Space reservation: **August 1, 2025**  
 Ad materials due: **August 6, 2025**  
 Publication date: **October 2025**

**BONUS**  
 This section will be posted on our website from October through May.

For information, please contact Kieran Keating, associate publisher/sales, at 401-649-4888, kkeating@rimonthly.com or your *Rhode Island Monthly* marketing consultant.

# ENCORE

YOUR GUIDE TO THE VISUAL AND PERFORMING ARTS IN RHODE ISLAND AND S.E. MASSACHUSETTS

## HIGHLIGHTED WRITE-UP SAMPLES

Use to highlight a show, a season summary or a Q&A

HALF-PAGE  
ADVERTISER  
SAMPLE

SPECIAL ADVERTISING SECTION

SPECIAL ADVERTISING SECTION

**NOV.**  
**2** Anthony Tomaselli  
Fourth Annual  
Holiday Art Sale:  
7 Thomas St., Providence,  
facebook.com/anthonyt.  
tomaselli.

**4** Areena Commemoration of 75th Anniversary of Newman Congregational Church, 22 Newman Ave., Rumford, areenassemble.org.

**8** Lewis Black: The Joke's on Us Tour at the Providence Performing Arts Center: Lewis Black's comedy shows provide a cathartic release of anger and disillusionment for his audience. Lewis is the rare comic who can cause an audience to laugh themselves silly while making compelling points about the absurdity of our world. 7:30 p.m., 220 Weybosset St., Providence, ppacri.org.

**14** RI Philharmonic Orchestra presents TACO Classical Concert: Artistic Centennial at the Vets: 8 p.m., 1 Avenue of the Arts, Providence, tickets.riphil.org.

**14-27** Next to Normal art show: Artists' Exchange, 50 Rolfe Square, Cranston, artists-exchange.org.

**15-19** **HyperMan: A Play by the Wilbury Theatre Group:** In the latest play written by break-beat poet Idris Goodwin, three rising hip-hop stars deal with issues of friendship, race and privilege in the wake of a tragedy. See website for times. 40 Sonoma Ct., Providence, thewilburygroup.org.

**19-22** **JUMP! Projects:** Jump! Dance Studio, 545 Pawtucket Ave., Pawtucket, jumpdanceco.org.

**19-27** **Museum Albel Interactive Murder Mystery:** Artists' Exchange, 50 Rolfe Square, Cranston, artists-exchange.org.

**27-29** **Once on an Island:** at the James and Gloria Maron Cultural Arts Center: 80 Button Hole Dr., Providence, academyplayersri.org.

**29** **PS2018 and Gift of Art Gallery Night Reception:** 80 Washington St., Providence, web.uri.edu/ceps/art.

**Q&A** Geraldine Smith, Executive Director of the Ocean State Philharmonic Orchestra and Music School

What have been some of your favorite performances? All of our concerts are unique and wonderful for different reasons. Our 2019 season finale, which featured Stravinsky's The Rite of Spring, immediately comes to mind. It was my first year as executive director, and the economy had recently collapsed -- threatening our existence, let alone our ability to perform a work with 100 musicians. We had to cut our budget by 13 percent. But then John and Letitia Carter made a special donation, and the performance was spectacular!

Which performances are you looking forward to in 2021-2022? What else is in the Philharmonic's future? This season we have an incredibly exciting and diverse season opener with the Philharmonic Orchestra's Rush Hour concert with Aaron Diehl. We mark our first of four AMICA Ring acclaimed jazz pianist John War! Armistice in November with the English conductor Christopher Warren Green (who you may recognize as the conductor at the recent Royal wedding).

Ocean State Philharmonic Orchestra and Music School, 33 Grayson Avenue, Pawtucket, tickets.oceanstatephil.org.

**200 words (full page advertisers)**

**30** **Narragansett Bay Symphony Community Orchestra Season Opening Concert at McVinney Auditorium:** 43 Dave Gavitt Way, Providence, nabsc.org.

**31** **Pawtucket Orchestra presents "The Romance of Rachmaninoff" at the Albiem:** Guest conductor, Michael Christie, leads the Pawtucket City Orchestra in its performances of Dukas's The Sorcerer's Apprentice and

Rachmaninoff's "Rhapsody on a Theme of Paganini": 8 and 10 p.m., 3 Smith Lane, Pawtucket, tickets.riphil.org.

**DEC.**  
**3** **Black Odyssey at Trinity Rep:** After Odysseus Lincoln is lost at sea and presumed dead, the Gulf

War veteran struggles to find his way back home to his wife and son while unknowingly being controlled by a host of gods. You will not want to miss this performance. Get your tickets early! 201 Washington St., Providence, trinityrep.com.

**4-11** **Artists' Exchange's Dickie's A Christmas Carol:** Theatre 82, 82 Rolfe Sq., Cranston, artists-exchange.org.

**15** **"Exploring Notions of Gender Identity: How Do You Read Gender?" Exhibit Gallery Night Reception and Pop-up Performances at URI's Providence Campus:** 5-9 p.m., 80 Washington St., Providence, web.uri.edu/ceps/campusresources/art.

**16-17** **Futurity by the Wilbury Theatre Group:** In an Avant-Americana musical by

**Performance Highlight**  
**A Christmas Carol: With a Twist**

This famous tale gets revamped when the main characters, from Scrooge to the ghosts of Christmas Past, Present and Future, exist in the year 2021. Led by Campbell Mitchell, this holiday play raises the embrace of the experience, with ensemble members who chat with the audience as a musical quartet of banjos, guitars and an accordion plays music on the stage. *The Woonsocket Youth Players Theatre, 40 Sonoma St., Woonsocket, thewoonsocketplayers.org.*

**100 words (half page advertisers)**

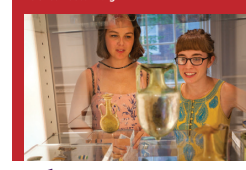
**Exhibition Highlights**

**Art Works at RISD**  
"Theresa Ganz: Storm Diptych" On display now through October 14, 2021. Combining video footage of hurricanes and music by Mozart, this exhibit evokes intense emotions and perception alteration.

"The Phantom of Liberty: Contemporary Works in the RISD" through contemporary more than for...  
**200 words (full page advertisers)**

"Forme" through January 20, 2021. Through various forms of media, this exhibit questions the American flag domestically and internationally.  
"A Changing Reflection Silver, Metalwork, and Jewelry in the 19th-21st Centuries" On display now through October 1, 2021. Part of the Decorative Arts and Design section, this exhibit looks at the evolution of tableware, decorative arts and jewelry and how metalwork is made in the modern age.

For more information on these exhibits and on the permanent collections at the RISD Museum of Art, visit risdmuseum.org.



indie band the Lippis, two people located thousands of miles apart try to imagine their way out of impossible circumstances. See website for times. 40 Sonoma Ct., Providence, thewilburygroup.org.

**18-21** **Scenes from the Polar Express:** Jump! Dance Studio, 545 Pawtucket Ave., Pawtucket, jumpdanceco.org.

**22** **thru Dec. 16. The Boy of the Winter Sky at the Children's Theater of Warwick:** 1245 Jefferson Blvd., Warwick, childrenstheaterofwarwick.org/season.org.

**22** **thru Dec. 2. Anastasia at the New Bedford Zellerbach Theater:** From the Tony Award-winning creators of the Broadway classic Ragtime, Anastasia transports you from the twilight of the Russian Empire to the euphoria of Paris in the 1920s, as a brave young woman sets out to discover the mystery of her past. Pursued by a ruthless Soviet officer determined to silence her, Anya enlists the aid of a dashing comman and a

lovable ex-arristocrat. 66 Main St., New Bedford, zellerbachtheater.org.

**23** **thru Dec. 2. Back of the Tread at Brown University's Leeds Theatre:** 167 Thayer St., Providence, brownpaprs.org.

**24-25** **Address Family in Concert:** 180 Button Hole Dr., Providence, academyplayersri.org.

**26** **thru Nov. 18. Little Shop of Horrors at the Contemporary Theater Company:** 327 Main St., Wakefield, contemporarytheatercompany.com.

**26-27** **Museum in the Park at the Artists Den:** 80 Buttrick Dr., Pawtucket, artinthe.park/artists.org.

**28** **Crafted Holiday:** 80 West St., Lincoln, web.art.edu/ceps.

**Downtown Center:** Guest conductor, Michael Christie, leads the Philharmonic Orchestra in its performances of The Nutcracker. This holiday classic will delight the whole family. Do not miss it! 8 p.m., 44 Main St., New Bedford, mass.tickets.newbedfordphil.org.

**JAN.**  
**7** **"Voices of Reconciliation Agents of Change" Performance and Exhibit Reception at URI's Providence Campus:** Enjoy music and spoken word accompanying the powerful exhibit, 5-8 p.m., 80 Washington St., Providence, web.uri.edu/ceps/campusresources/art.

**4-28** **"Women Stealing into the Future" at URI's Providence Campus:** 80 Washington St., Providence, web.uri.edu/ceps/campusresources/art.

**29** **thru Feb. 28. "Voices of Reconciliation, Agents of Change" at URI's Providence Campus:** Gain more knowledge through this black

FULL-PAGE OR LARGER  
ADVERTISER SAMPLES

**Descriptive Event Listings**  
Half page or larger advertisers receive up to five descriptive event listings. All other advertisers receive up to three descriptive event listings.

For information, please contact Kieran Keating, associate publisher/sales, at 401-649-4888, kkeating@rimonthly.com or your Rhode Island Monthly marketing consultant.